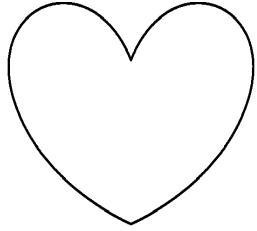


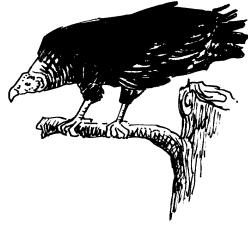
Alfabeto Básico del Mixteco de Stgo. Nuyoo

A a



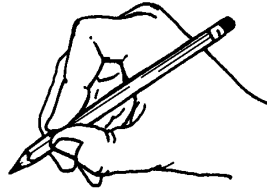
ánima'
corazón

Ch ch



chií
zopilote

E e



tée re'
él escribe

F f



ntufi' re'
él se lastimó

I i



ita'
flor

I i



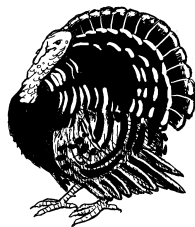
iin
uno

J j



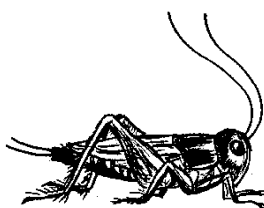
jíi'
anciano

K k



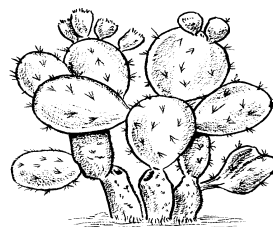
kolo
guajolote

L l



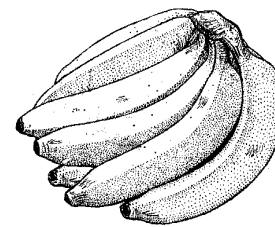
lí'lí
grillo

M m



mi'ne'
nopal

N n



nika
platano

Ñ ñ



ñivi
gente

O o

P p

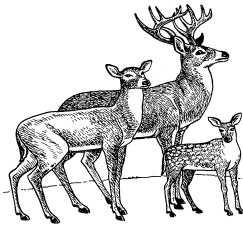
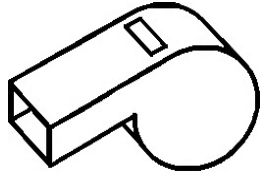
R r

S s

T t

U u

20



8

oko'
veinte

pítu'
silbato

rá isu'
los venados

sate'
garza

taka'
nido

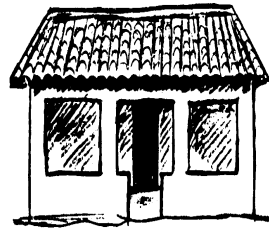
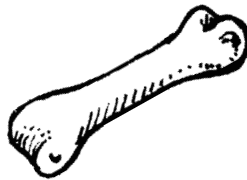
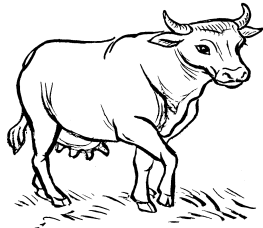
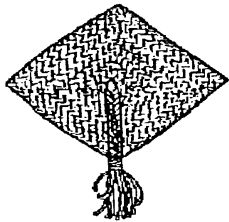
una'
ocho

V v

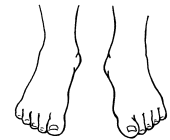
X x

Y y

I



Ji ji



jie'e' pie

Ku ku



kuánu ardilla

vichi
soplador

xiniki'
vaca

yiki
hueso

ve'i
casa

Ti ti



tiaká pez

/ tono alto
lí'lí grillo
tono medio
ve'i casa
— tono bajo
sate' garza